



INTRODUCTION

[Russell](#)

[Seasons](#)

[Awards](#)

[Villas](#)



EAGLES NEST

EAGLES NEST... “SOMEWHERE BETWEEN SEVEN STARS AND HEAVEN”

The Bay of Islands in New Zealand’s North Island is an ultimate maritime playground where the emotional lure of water is an ever-changing backdrop to the world class Eagles Nest.

Culinary resources, including fabulous resident chefs, a superb wine cellar and fresh locally sourced produce, create memorable dining experiences in your own villa. Spa therapists are available for exquisite in-villa treatments. The Bay of Islands is known for all manner of water activities.

Eagles Nest concierge will tailor make an unforgettable experience speaking specifically to your interests ensuring maximum enjoyment.

The 360-degree views of sea and land are seamlessly connected. Elegant, stylish settings within villas compliment these views.

This is like your own private island where you can access the infrastructure of the charming and historic village of Russell only moments away.

The villas at Eagles Nest possess an “other worldly” charm – we invite you to partake.

LOCATION/ TRAVEL TIMES

Driving Times (To Eagles Nest from)

Bay of Islands (Keri Keri Airport)	45 Min
Whangarei	1.25 Hrs
Auckland	3.50 Hrs
Rotorua	6.50 Hrs

Domestic Flight times (Including lay over's if applicable)

Auckland to Bay of Islands	40 Min
Rotorua to Bay of Islands	1.50 Hrs
Wellington to Bay of Islands	2.00 Hrs
Christchurch to Bay of Islands	2.75 Hrs
Queenstown to Bay of Islands	3.25 Hrs



RUSSELL

Russell (Kōrorareka) a cosy, historic seaside village sits on a peninsula in the eastern Bay of Islands. Since the 1700s it has provided a haven for visitors, offering shelter and hospitality. Because of its relatively remote location it retains an island quality and a charm that reflects the tranquillity of earlier times. Despite this, it is a vibrant, cosmopolitan community that attracts visitors from New Zealand and globally - some have never left.

Russell's colourful and varied past makes it unique in New Zealand. The sea plays a large part in its history from the journeys of Maori waka to whaling ships, coastal steamer to game fish launch, yacht to tour boat.

Despite good road access, the peninsula has an island charm with a treasure trove of history and heritage. It is a community that welcomes visitors and new residents retaining its village flavour. A great range of cafes, restaurants, galleries and even a museum feature here.



The town of Russell, 2 minutes' drive from Eagles Nest



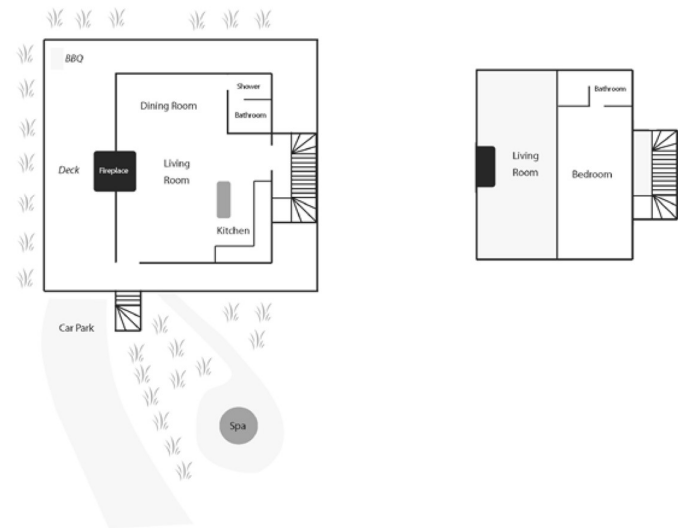
	Spring Sep / Oct / Nov		Summer Dec / Jan / Feb		Autumn Mar / Apr / May		Winter Jun / Jul / Aug	
<i>Bay of Islands</i>	<i>High</i>	<i>Low</i>	<i>High</i>	<i>Low</i>	<i>High</i>	<i>Low</i>	<i>High</i>	<i>Low</i>
Temperature (C)	19	9	25	14	21	11	16	7
Temperature (F)	67	48	76	56	70	52	61	45
Rain Days/Season	11		7		11		16	

NEW ZEALAND SEASONS

New Zealand has a varied temperature range, without the extremes found in most continental climates. However, New Zealand weather can change unexpectedly—with cold fronts or tropical cyclones quickly emerging. Being prepared for sudden changes in weather conditions is key. The temperatures mentioned are daily maximum and minimum Celsius and Fahrenheit for New Zealand.

NEW ZEALAND SUNSHINE

Most places in New Zealand receive over 2,000 hours of sunshine a year. As New Zealand observes daylight saving, during summer months daylight occurs through to 9pm. New Zealand experiences little air pollution compared to many other countries, where UV rays are very strong during the summer months. To avoid sunburn, visitors are urged to wear sunscreen, sunglasses, and hats when having fun in the sun, especially 11 am - 4 pm. While summer is sunnier than the other seasons, most regions in New Zealand have a relatively high proportion of sunlight during the winter months.



FIRST LIGHT VILLA

Max Occupancy 2 persons in one bedroom

(1 Super King Bed that can be split)

A cosy romantic nest for 2, this villa overlooks magnificent seascapes and native bush. The mezzanine bedroom has a floor to ceiling glass shower and louvered skylight over the bed. This beautiful villa has an indoor-outdoor fireplace and bi-folding glass walls that open onto a stunning alfresco space with a pathway that leads to a private jacuzzi nestled in the native landscape.

Key Features — Approximately 152sq meters including deck, jacuzzi, WIFI access, audio-visual system, air conditioning, large expansive outdoor space with bbq, fully equipped gourmet kitchen, laundry facilities, two ensuite bathrooms, under floor heating, eco bathroom amenities, hair dryer, electronic safe, mini bar and access to a shared helipad.

EYRIE VILLA

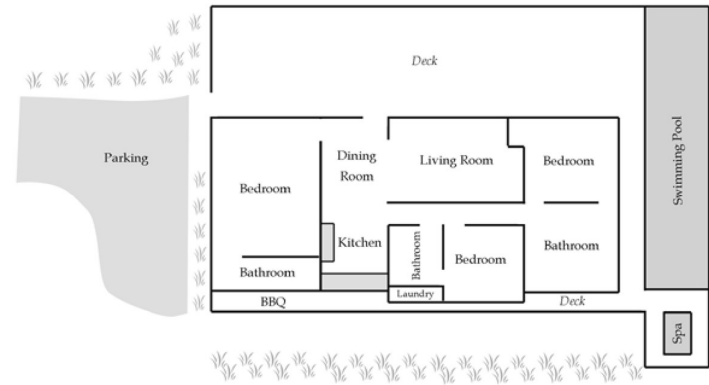
Max Occupancy 6 persons in three bedrooms

(2 King beds that can be split and 1 double)

Eyrie has three double bedrooms with ensuites, open plan living/dining/kitchen area, where indoors and outdoors blend seamlessly connected by a large outdoor space overlooking the beautiful Bay of Islands. It also has its own horizon edge swimming pool and jacuzzi; both enjoying sea and garden views. Eyrie has a plethora of unique artwork scattered throughout.

Palm trees, stone statues and fairy tale night lighting contribute to the unforgettable ambience that Eagles Nest has become so famous for.

Key Features — Approximately 222 sq meters including deck. Heated infinity pool, jacuzzi, WIFI access, audio-visual system, air conditioning, large expansive outdoor space with bbq, fully equipped gourmet kitchen, laundry facilities, three ensuite bathrooms, eco bathroom amenities, hair dryers, electronic safe, mini bar and access to a shared helipad.



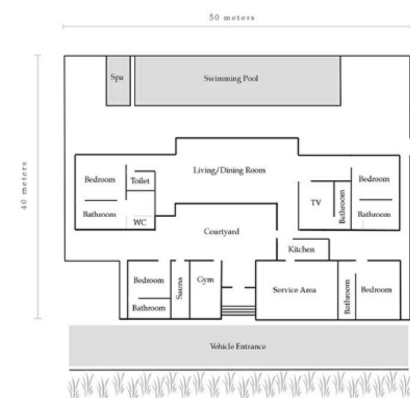


EAGLE SPIRIT VILLA

**Max Occupancy 6 persons in three bedrooms
(2 King beds that can be split and 1 double)**

Eagle Spirit has three double bedrooms with ensuites, an open plan living/dining/kitchen area all accessing a large sunset deck overlooking the beautiful Bay of Islands. With its own horizon edge swimming pool and jacuzzi enjoying sea and garden views. Eagle Spirit has a plethora of unique artwork scattered throughout.

Key Features — Approximately 243 sq meters including deck. Heated infinity pool, jacuzzi, WIFI access, audio-visual system, air conditioning, large expansive outdoor space with bbq, fully equipped gourmet kitchen, laundry facilities, three ensuite bathrooms, eco bathroom amenities, hair dryers, electronic safe, mini bar, and access to a shared helipad.



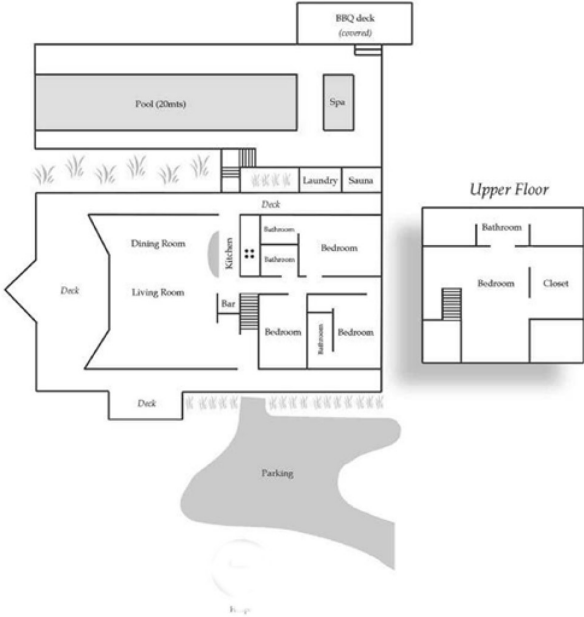
SACRED SPACE VILLA

Max Occupancy 8 persons in four bedrooms. 3 King beds

(2 can split) 1 Queen Bed

Sacred Space has 4 double bedrooms. The master bedroom is located on an upper level with walk in wardrobes, full bathroom, and lounge area. The remaining three bedrooms are at ground level and each with their own ensuite. The villa has a large open plan lounge/dining/kitchen with home theatre and fully equipped kitchen, catering easily for 10 persons. Complimented by a heated 20 metre infinity pool, sauna, and spa amidst native landscape with stunning sea views this villa also enjoys a plethora of unique artwork scattered throughout.

Key Features — Approximately 270 sq meters including decks. Private helipad, heated infinity pool, jacuzzi, sauna, WIFI access, home theatre system, large expansive outdoor space with bbq, fully equipped gourmet kitchen, laundry facilities, four ensuite bathrooms and one additional bathroom, eco bathroom amenities, hair dryers, electronic safe and mini bar.





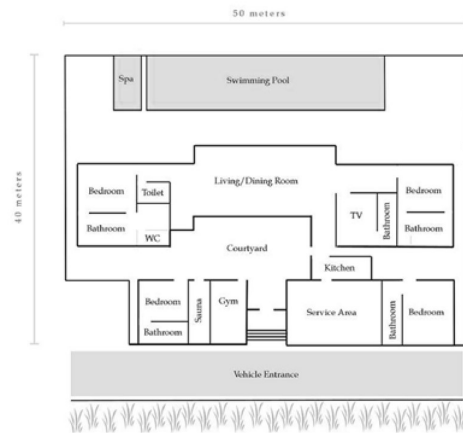
RAHIMOANA (PRESIDENTIAL VILLA)

Max Occupancy 8 persons in four bedrooms.

4 King beds (2 can be split)

This is Eagles Nests' presidential villa offering 320-degree views of the Bay of Islands. This villa features four magnificent bedrooms with dedicated ensuites, twenty-five metre heated infinity pool, jacuzzi, state of the art gymnasium with infra-red sauna, *integrated* smart systems, home cinema featuring a 100" screen, state of the art audio visual system, shared media and office space, original NZ and international art works scattered throughout, native bush walks, private beach all within a gated secure environment.

Key Features — *Approximately 1,000 sq meters including decks. Private electronically controlled security gates, private Heli pad, heated infinity pool, jacuzzi, sauna, gymnasium, shared media/office space, WIFI access, home theatre system, air conditioning, large expansive outdoor space with bbq, fully equipped gourmet kitchen, laundry facilities, four ensuite bathrooms and four additional bathrooms, eco bathroom amenities, hair dryers, electronic safe and mini bar.*





POLICIES & INCLUSIONS

All Villa Inclusions

- Luxury accommodation
- Bottle of Louis Roeder champagne on arrival
- WIFI access
- Fresh fruit platter (replenished daily)
- Gourmet breakfast provisions (replenished daily)
- Daily villa servicing
- Mini bar
- Concierge services & complimentary round trip Russell transfers

Additional Services (*charges apply*)

- Personal chef
- Catering
- Laundry & dry-cleaning services
- Beauty/massage therapists
- Chauffeur
- Butler
- Personal shopping and provisioning of villas

Rahimoana Inclusions (+ All villa inclusions)

- Porsche Cayenne for guest use & golf cart to access private beach.
- Personal concierge
- Selection of New Zealand wines and French champagne
- Bar selection
- A personal chef prepares a continental breakfast, and dinner (up to 3 courses)
- Gourmet breakfast provisions (replenished daily)
- Daily villa servicing
- WIFI access

Environmental Commitment — Each villa is serviced with eco-friendly products in accordance with Eagles Nest commitment to protect Papatūānuku (Earth Mother). In addition, departments recycle products from all areas of the property.

Guests are encouraged to participate and play their part in our endeavours by reducing water usage when in villa.

Child Policy — Children of all ages are welcome. Cots and highchairs are available complimentary and must be pre-booked.

Smoking Policy — Please note due to New Zealand law all internal areas of Eagles Nest are classified as “Smoke Free”. We encourage guests wishing to indulge to do so at their private outdoor spaces enjoying the superb views whilst doing so.

Arrival & Departure Policy — Check in time, on day of arrival is 14.00 (2pm) Check out, on day of departure is 11.00 (11am) Those guests wishing to arrive early cannot be guaranteed access to their villa. If guests wish to pre-register for an early arrival, this must be done in advance, subject to availability and additional charges may apply. For those guests requesting a late departure, this must be done in advance, subject to availability and additional charges may apply.



AWARDS & ACCOLADES

2011-2020 World Travel Awards - NZ's leading Resort

2013-2014 Seven Star Global Luxury Awards - Signum Virtuis (Seal of Excellence)

2013 World Travel Awards - World's Leading Boutique Villa Resort

2012 Luxury Travel Magazine - Finalist as Best Overseas Boutique Property Villa or Lodge

2012 Luxury Travel Magazine - Finalist as Best New Zealand Property within 3 hours of a City

2012 Trip Advisor - Certificate of Excellence

2011 World Luxury Hotel Awards - Country Winner, Luxury Villa Resort

2011 World Travel Awards - Nominated as Australasia's Leading Villas

2010 World Luxury Hotel Awards - Global Winner, Luxury Coastal Hotel

2010 Elite Traveller - Worlds Best Suite

2010 World Luxury Hotel Awards - Hot List

2010 Irish Independent Weekend - 10 Best Boutique Bolt-Holes Down Under

2010 Conde Nast Traveller Gold List



**EAGLES NEST
ASSOCIATIONS**



FOR MORE INFORMATION, PLEASE CONTACT US:

—
Eagles Nest
60 Tapeka Road / Russell / Bay of Islands / NZ
P +64 9 403 8333 / F +64 9 403 8880
admin@eaglesnest.co.nz
www.eaglesnest.co.nz