



# INTRODUCTION

[Russel](#)

[Seasons](#)

[Awards](#)

[Villas](#)



## EAGLES NEST INTRODUCTION

---

## EAGLES NEST... “SOMEWHERE BETWEEN SEVEN STARS AND HEAVEN”

The Bay of Islands in New Zealand’s Northland, is the worlds ultimate maritime playground where the intrinsic romanticism and emotional lure of water is an ever-changing backdrop to the worlds ultimate retreat... Eagles Nest.

Culinary resources, including fabulous resident chefs, a superb wine cellar and fresh locally sourced foods, create memorable dining experiences in your own villa. Spa therapists are available for exquisite in-villa treatments and our resident personal trainer can help maintain or enhance your regimen. The Bay of Islands

is world-renowned for every water sport known to man. Let the talented concierge team tailor make a specialized itinerary catered especially to your interests and maximize your enjoyment in the Bay of Islands.

Sited and designed to maximize and enhance the views, large windows open to the sea and subtropical landscapes, seamlessly connecting the outdoors to their interior spaces. Consistently elegant, simple style with eclectic, informal interiors perfectly enhance inspirational views. You will feel like you

are on your own private island yet still have the infrastructure of the charming and historic village of Russell just two minutes away.

Eclipse the villa in Tuscany, the South of France and Nantucket as you immerse yourself in the New World alternative in villa experience. The villas at Eagles Nest are an extraordinary treasure for those who have to have their own slice of sea and heaven.



# LOCATION/ TRAVEL TIMES

## Driving Times (To Eagles Nest from)

Bay of Islands (Keri Keri Airport)	45 Min
Whangarei	1.25 Hrs
Auckland	3.50 Hrs
Rotorua	6.50 Hrs

## Domestic Flight times (Including lay over's if applicable)

Auckland to Bay of Islands	40 Min
Rotorua to Bay of Islands	1.50 Hrs
Wellington to Bay of Islands	2.00 Hrs
Christchurch to Bay of Islands	2.75 Hrs
Queenstown to Bay of Islands	3.25 Hrs



# RUSSELL

---

Russell (Kororareka) is a small, historic seaside village on a peninsula in the eastern Bay of Islands. Since the 1700s it has provided a haven for visitors, offering shelter and hospitality. Because of its relatively remote location it retains an island quality and a charm that reflects the tranquility of earlier times. Despite this, it is a vibrant, cosmopolitan community that attracts visitors from New Zealand and all over the world – some of whom have chosen to make Russell their home.

Russell's colourful and varied past makes it unique in New Zealand. The sea runs through its history from Maori waka to whaler, coastal steamer to game fish launch, yacht to tour boat.

Despite good road access, the peninsula still has an island quality and a sense that history and heritage are treasured. It is a community that welcomes visitors and new residents but keeps its village flavour. A great range of cafes, restaurants, galleries and even a museum feature here.





	Spring Sep / Oct / Nov		Summer Dec / Jan / Feb		Autumn Mar / Apr / May		Winter Jun / Jul / Aug	
Bay of Islands	High	Low	High	Low	High	Low	High	Low
Temperature (C)	19	9	25	14	21	11	16	7
Temperature (F)	67	48	76	56	70	52	61	45
Rain Days/Season	11		7		11		16	

## NEW ZEALAND SEASONS

New Zealand does not have a large temperature range, lacking the extremes found in most continental climates. However, New Zealand weather can change unexpectedly—as cold fronts or tropical cyclones quickly blow in. Because of this, you should be prepared for sudden changes in weather. The temperatures above are mean daily maximum and minimum temperatures in Celsius and Fahrenheit for New Zealand.

## NEW ZEALAND SUNSHINE

Most places in New Zealand receive over 2,000 hours of sunshine a year. As New Zealand observes daylight saving, during summer months daylight can last up until 9.00 pm.

New Zealand experiences relatively little air pollution compared to many other countries, which makes the UV rays in our sunlight very strong during the summer months. In order to avoid sunburn, visitors

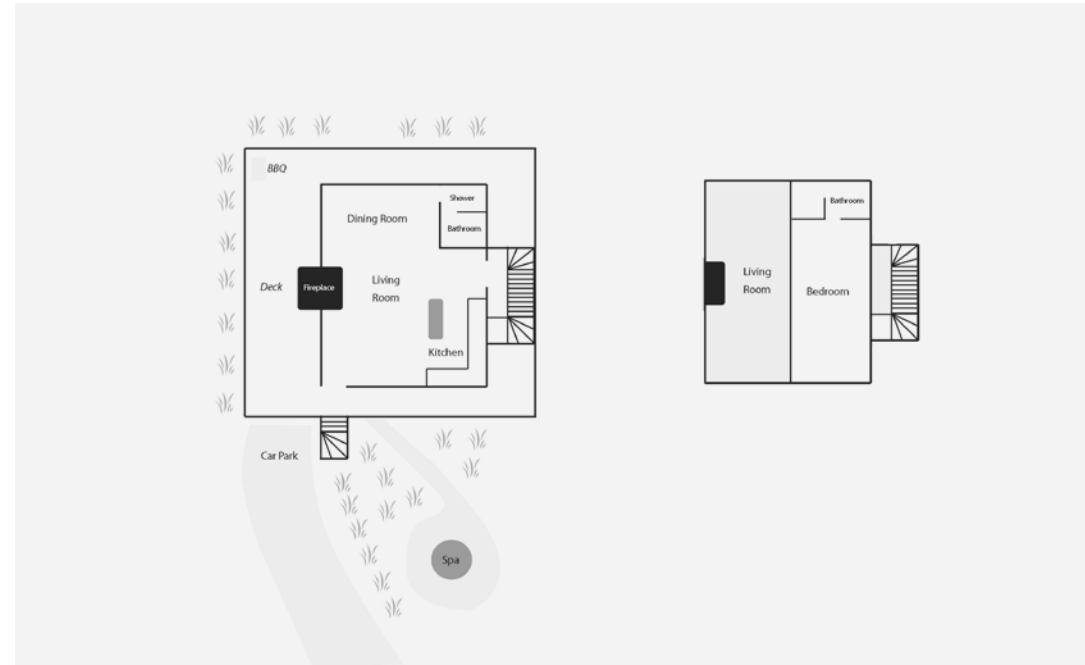
should wear sunscreen, sunglasses, and hats when they are in direct summer sunlight, especially in the heat of the day (11 am - 4 pm).

While summer is sunnier than the other seasons, most regions in New Zealand have a relatively high proportion of sunlight during the winter months.





## 06 — Accommodation Information



## FIRST LIGHT VILLA

**Max Occupancy 2 pax in one bedroom  
(1 Super King Bed that can be split)**

This is our most romantic villa which overlooks magnificent seascapes and is the ultimate retreat for two! The mezzanine bedroom has a floor to ceiling glass shower and a louvered skylight over the bed. This beautiful Villa has an indoor-outdoor fireplace and bi-folding glass walls that open onto a stunning sunset deck with pathway that leads to a private Jacuzzi nestled in the native bush.

**Key Features** — Approximately 152sq meters including deck. Private electronically controlled security gates, Jacuzzi, complimentary high speed wireless internet access, home cinema system including sky satellite television, DVD/CD player, air conditioning, large expansive deck with bbq, fully equipped gourmet kitchen, laundry facilities, two ensuite bathrooms, under floor heating, Eco Store bathroom amenities, hair dryers, electronic safe, mini bar and access to a shared helipad.



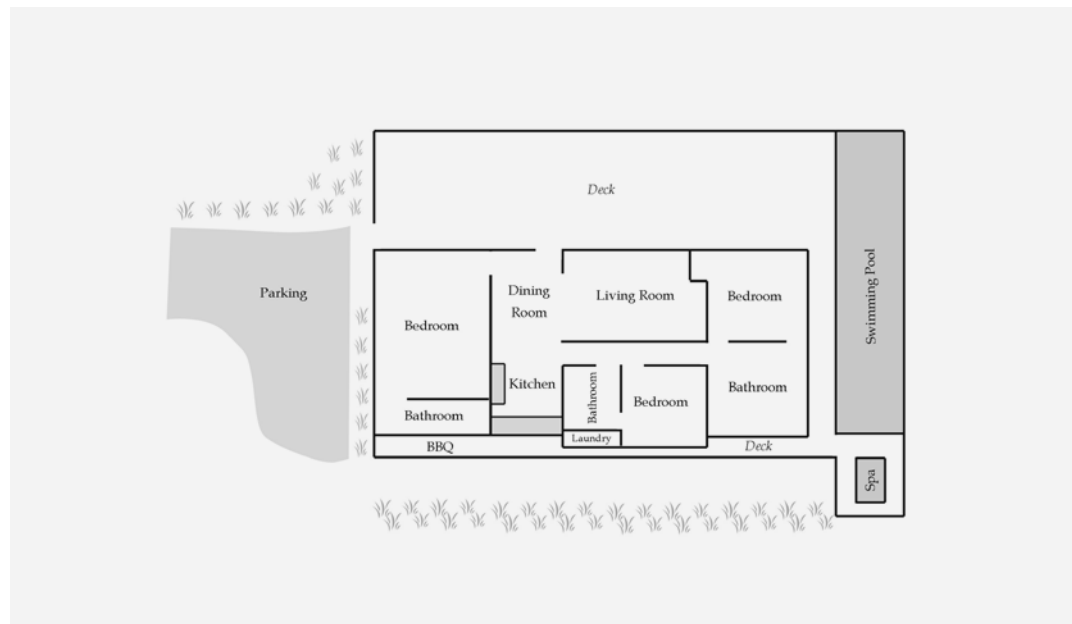
## THE EYRIE VILLA

**Max Occupancy 6 pax in three bedrooms**  
**(2 King beds that can be split and 1 double)**

The Eyrie has three double bedrooms all with ensuite, an open plan living/dining room with a romantic fire place and a designer kitchen, all opening onto a large sun-set deck overlooking the beautiful Bay of Islands. It also has its own horizon edge swimming pool and own private spa overlooking the sea. The Eyrie has a stunning impact in design, landscaping and artwork, enhanced by the unique Eagles Nest personality and energy.

Palm trees, stone statues and fairy tale night lighting contribute to the unforgettable ambience that Eagles Nest has become so famous for.

**Key Features** — Approximately 222 sq meters including deck. Heated horizon edged lap pool, Jacuzzi, wireless internet access, home cinema system including sky satellite television, plasma TV, DVD/CD player with iPod docking stations, air conditioning, large expansive deck with bbq, fully equipped gourmet kitchen, laundry facilities, three ensuite bathrooms, Eco Store bathroom amenities, hair dryers, electronic safe, mini bar and access to a shared helipad.







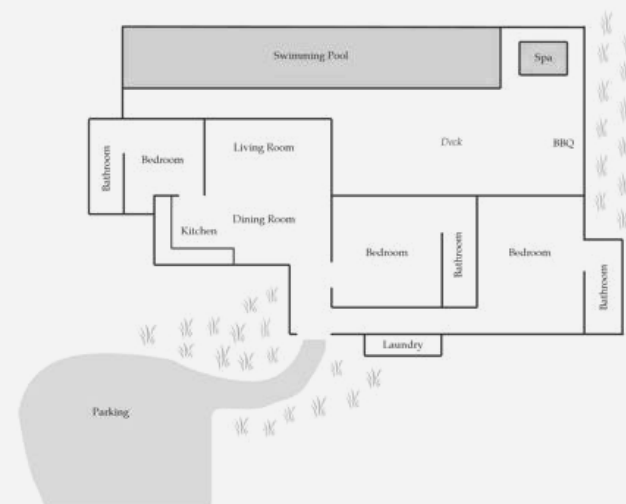
## THE EAGLE SPIRIT VILLA

**Max Occupancy 6 pax in three bedrooms  
(2 King beds that can be split and 1 double)**

The Eagle Spirit has three double bedrooms all with ensuites, an open plan living/dining room with a romantic fireplace and a designer kitchen, all opening onto a large sunset deck overlooking the beautiful Bay of Islands. It also has its own horizon edge swimming pool and own private spa overlooking the sea, The Eagle Spirit has a stunning impact in design, landscaping and artwork, enhanced by the unique Eagles Nest personality and energy.

Palm trees, stone statues and fairy tale night lighting contribute to the unforgettable ambience that Eagles Nest has become so famous for.

**Key Features** — Approximately 243 sq meters including deck. Heated horizon edged lap pool, Jacuzzi, wireless internet access, home cinema system including sky satellite television, plasma TV, DVD/CD player with iPod docking station, air conditioning, large expansive deck with bbq, fully equipped gourmet kitchen, laundry facilities, three ensuite bathrooms, Eco Store bathroom amenities, hair dryers, electronic safe, mini bar and access to a shared helipad.





## SACRED SPACE VILLA

**Max Occupancy 8pax in four bedrooms. 3 King beds  
(2 can split) 1 Queen Bed**

This stunning villa has 4 double bedrooms. The largest is upstairs and has walk in wardrobes, full bathroom and lounge area. The remaining three bedrooms are on the ground level and each has its own full ensuite. The house has a large lounge and dining area with a home movie theatre and fully equipped kitchen for in-house dining. Sacred Space overlooks a heated 20 metre infinity pool, sauna and spa, and is surrounded by stunning views.

**Key Features** — Approximately 270 sq meters including decks. Private electronically controlled security gates, private helipad, heated horizon edged lap pool, jacuzzi, sauna, wireless internet access, home cinema system including sky satellite television, large screen TV, DVD/CD player with iPod docking station, large expansive deck with bbq, fully equipped gourmet kitchen, laundry facilities, four ensuite bathrooms and one additional bathroom, Eco Store bathroom amenities, hair dryers, electronic safe and mini bar.





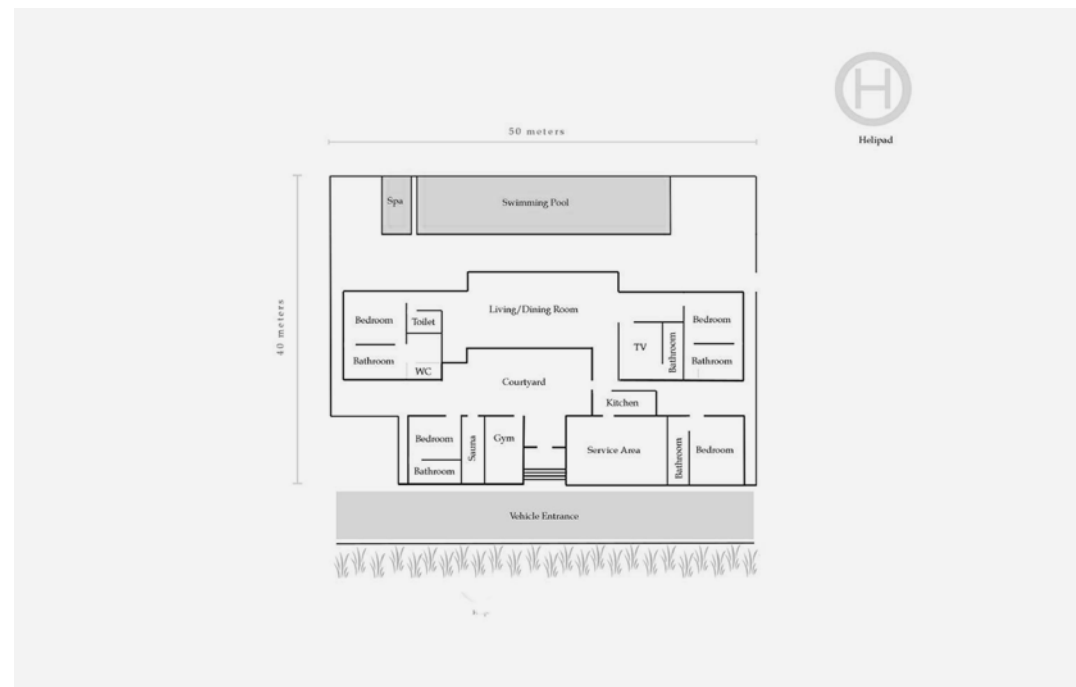


## RAHIMOANA (PRESIDENTIAL VILLA)

**Max Occupancy 8pax in four bedrooms.  
4 King beds (2 can be split)**

This multi award winning villa is Eagles Nests' presidential villa offering 320 degree views of the Bay of Islands. This villa features four private bedrooms with original NZ and international art works, twenty five metre heated infinity lap pool and Jacuzzi, state of the art gymnasium and far infra red sauna, integrated smart systems, home cinema featuring a 100" screen, hi fi systems in each bedroom, high technology office, native bush walks, private beach and security throughout.

**Key Features** — Approximately 1,000 sq meters including decks. Private electronically controlled security gates, private heli pad, heated horizon edged lap pool, Jacuzzi, sauna, gymnasium, high technology office, wireless internet access, home cinema system including sky satellite television, plasma TV, 100" movie screen, DVD/CD player with iPod docking station, air conditioning, large expansive deck with bbq, fully equipped gourmet kitchen, laundry facilities, four ensuite bathrooms and four additional bathrooms, Eco Store bathroom amenities, hair dryers, electronic safe and mini bar.







## POLICIES & INCLUSIONS

### Rate Inclusions

- Luxury Accommodation
- Bottle of Louis Roeder Champagne on arrival
- Wireless Internet Access
- Fresh fruit platter (replenished daily)
- Gourmet breakfast provisions (replenished daily)
- Daily Servicing of villa
- Selected mini bar items
- Concierge Services & complimentary Russell transfers

### Additional Services (*charges apply*)

- Personal Chef
- Catering
- Personal Trainer
- Beauty/Massage Therapists
- Chauffeur
- Butler
- Personal shopping and provisioning of Villas
- Laundry & Dry-cleaning services

### Rahimoana Rate Inclusions

- Porsche Cayenne for guest use & off road golf cart/s to access private beach.
- Personal Concierge/Villa Manager
- Selection of New Zealand wines and French Champagne
- Bar Selection
- One Personal Chef prepared meal of choice daily
- Gourmet breakfast and fruit provision (replenished daily)
- Daily servicing of villa
- Wireless Internet Access

**Environmental Commitment** —Each Villa is serviced with eco-friendly products in accordance with Eagles Nest commitment to protect the environment. In addition, all departments recycle bottles and paper from all aspects of the estate.

Guests are offered an opportunity to participate in our endeavors by reducing the water and detergent consumption used during the laundering of linen from villas through a voluntary scheme. This scheme also extends to energy and water conservation.

**Child Policy** —Children of all ages welcome. Cots and high chairs are available free of charge if pre-booked.

**Smoking Policy** — Please note that due to New Zealand law all internal areas of Eagles Nest are classified as “Smoke Free” We encourage guests wishing to indulge in smoking to do so on their private covered balconies whilst enjoying the superb views of the Bay of Islands.

**Arrival & Departure Policy** — Check in time, on day of arrival is 14.00 (2pm) Check out, on day of departure is 11.00 (11am) Those guests wishing to arrive early cannot be guaranteed access to their villa. If guests wish to pre-register for an early arrival, this must be done in advance and is the equivalent of 50% of the nightly tariff.



**AWARDS & ACCOLADES**

2014 Seven Star Global Luxury Awards - Signum Virtuis (the Seal of Excellence)

2013 World Travel Awards – World’s Leading Boutique Villa Resort

2013 Seven Star Global Luxury Awards - Signum Virtuis (the Seal of Excellence)

2013 World Travel Awards – Australasia’s Leading Villa Resort

2013 World Travel Awards – New Zealand’s Leading Resort

2012 World Travel Awards – New Zealand’s Leading Resort

2012 Luxury Travel Magazine – Finalist as Best Overseas Boutique Property Villa or Lodge

2012 Luxury Travel Magazine – Finalist as Best New Zealand Property within 3 hours of the City

2012 Trip Advisor – Certificate of Excellence

2011 World Luxury Hotel Awards – Country Winner, Luxury Villa Resort

2011 World Travel Awards – New Zealand’s Leading Resort

2011 World Travel Awards – Nominated as Australasia’s Leading Villas

2010 World Luxury Hotel Awards – Global Winner, Luxury Coastal Hotel

2010 Elite Traveler – Worlds Best Suite

2010 World Luxury Hotel Awards – Hot List

2010 Irish Independent Weekend – 10 Best Boutique Bolt-Holes Down Under

2010 Conde Nast Traveller Gold List

2009 Conde Nast Traveller Gold List Worlds Top 100 Hotels

2009 Tatler Magazine World’s Best 101 Hotels

2009 Best Hotels (Russia) Worlds Best 50 Hotels

2009 Luxury Holidays and Corporate Travel World’s 10 Best Cliff Edge Pools

2008 Conde Nast Traveller Gold List Highest Rated Hotel in the Worlds Top 100 Hotels

2008 Qualmark Exclusive Rating (one of only 8 in New Zealand)

2008 Luxury Travel & Style Rated in the top 15 best overseas boutique properties

2007 L Officiel Voyage Top 100 beach hotels in the World

2007 Kia Ora Air New Zealand Magazine Top ten New Zealand Luxury Lodges

2004 World Travel Awards New Zealand’s leading Resort





## EAGLES NEST ASSOCIATIONS



## FOR MORE INFORMATION PLEASE DON'T HESITATE TO CONTACT US

—  
 Eagles Nest  
 60 Tapeka Road / Russell / Bay of Islands / NZ  
 P +64 9 403 8333 / F +64 9 403 8880  
[admin@eaglesnest.co.nz](mailto:admin@eaglesnest.co.nz)  
[www.eaglesnest.co.nz](http://www.eaglesnest.co.nz)